

CLEANING A BLOOD OR BODY FLUID SPILL

PREVENTING THE SPREAD OF INFECTIONS

1



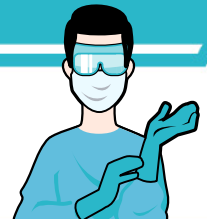
RESTRICT AREA & ASSEMBLE ADEQUATE SUPPLIES

YOUR SPILL KIT SHOULD INCLUDE:

- disposable gloves
- paper towels
- cleaning and disinfecting products
- 70-90% alcohol-based hand sanitizer
- garbage bags, and
- other personal protective equipment (PPE) such as a mask, eye goggles and gown if there may be splashes

PUT ON GLOVES & OTHER PERSONAL PROTECTIVE EQUIPMENT (PPE)

- Use alcohol-based hand sanitizer and put on disposable gloves and other PPE as needed.



2

3

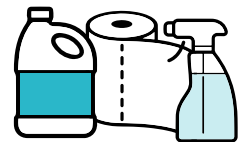


CLEAN THE SURFACES

- Use paper towels to remove all liquids and objects.
- Check the surrounding area for splatters or splashes.
- Thoroughly scrub soiled surfaces with cleaning solution and warm water.
- Rinse surfaces with clean water.
- Discard all waste in a plastic-lined receptacle.

DISINFECT* THE SURFACES

- Disinfect* the soiled area and allow surfaces to remain wet for the required contact time.



4

5



REMOVE PPE

- Remove and discard gloves and then use alcohol-based hand sanitizer.
- Remove and discard all other PPE (if used) and then use alcohol-based hand sanitizer again.

REMOVE WASTE & PERFORM HAND HYGIENE

- Double-bag, seal and remove waste* from the area and use alcohol-based hand sanitizer.
- If hands are visibly dirty, they must be washed with soap and running water.

NOTE: Check with local municipality for proper hazardous waste disposal.



6